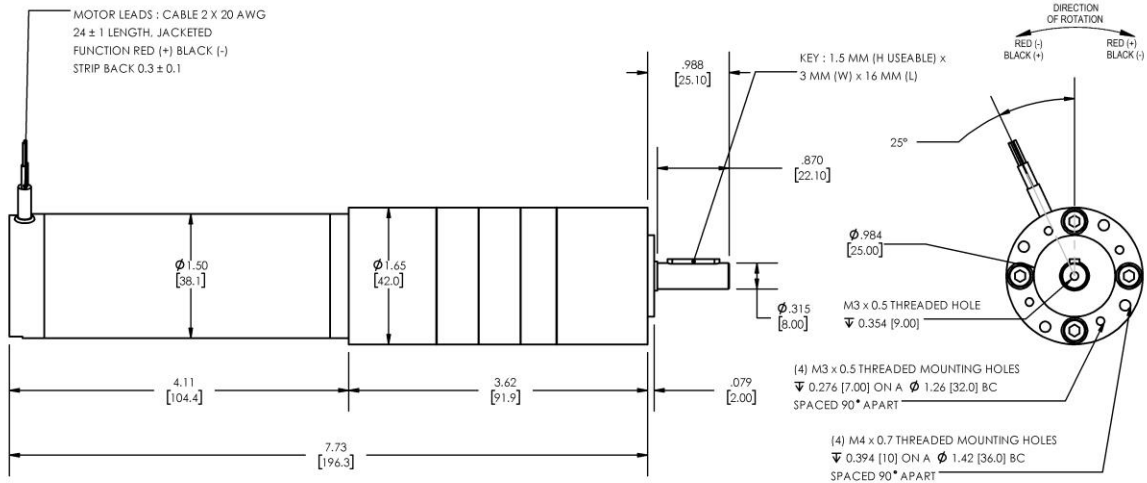


**Model Number:**  
**MMP S17-400A-12V GP42-059**



DIMENSIONS ARE INCHES [MM] UNLESS OTHERWISE STATED

| PLANETARY GEARMOTOR OUTPUT PARAMETERS:   | VALUE        | UNITS       | TOLERANCE |
|--|--------------|-------------|-----------|
| Gearhead Ratio (exact)                   | 58.85 : 1    |             |           |
| Gearmotor Output Speed (at Cont. Torque) | 86           | RPM         | +/- 15%   |
| Gearmotor Rated Continuous Torque        | 26           | In-Lbs      | MAX       |
| Gearmotor Peak Torque Capacity           | <b>164++</b> | In-Lbs      | MAX       |
| Gearhead Standard Backlash               | 60           | Arc Minutes | MAX       |
| Gearhead Efficiency                      | 70%          | ----        | ----      |
| Output Shaft Radial Load Capacity        | 68           | Lbs         | MAX       |
| Output Shaft Axial Load Capacity         | 25           | Lbs         | MAX       |
| Gearmotor Total Weight                   | 2.7          | Lbs         | MAX       |

**++ All Peak Torque values are dependent upon duty. Contact our sales office for details.**

| DC MOTOR PERFORMANCE PARAMETERS: | VALUE | UNITS     | TOLERANCE |
|----------------------------------|-------|-----------|-----------|
| Input DC Voltage                 | 12    | DC VOLTS  | ----      |
| No-Load Current                  | 0.87  | AMPERES   | MAX       |
| No-Load Speed                    | 5355  | RPM       | +/- 15%   |
| Rated Continuous Torque          | 10    | OZ-IN     | MAX       |
| Rated Continuous Current         | 4.3   | AMPERES   | MAX       |
| Rated Speed (at Cont. Torque)    | 5068  | RPM       | +/- 15%   |
| Rated Continuous Power Out       | 38    | WATTS     | +/- 15%   |
| Peak Motor Torque                | 64    | OZ-IN     | MAX       |
| Peak Motor Current               | 22.2  | AMPERES   | MAX       |
| Back EMF Constant (Ke)           | 2.2   | V/KRPM    | +/- 10%   |
| Torque Constant (Kt)             | 3.0   | OZ-IN/AMP | +/- 10%   |
| DC Armature Resistance           | 0.25  | OHMS      | +/- 15%   |
| Armature Inductance              | 0.07  | mH        | +/- 15%   |
| Number of Motor Poles            | 4     | (-)       | ----      |
| Armature temperature             | 155   | DEG. C    | MAX       |

NOTES:

1. Rated speeds may drop as the motor temperature increases. Values are stated with the motor at 25 °C.
2. All Peak Torque values are dependent upon duty. Contact our sales office for details.

ENCODER & BRAKE OPTIONS AVAILABLE – [FOLLOW THIS LINK FOR DETAILS](#)

NEMA MOUNTING FLANGE OPTION AVAILABLE – [FOLLOW THIS LINK FOR DETAILS](#)